



Oldham
Council

Delegated Decision

Proposed Prohibition of Waiting - Huddersfield Road, Scouthead

Report of: Deputy Chief Executive – People and Place

Officer contact: Alister Storey / Andrew Cowell, Traffic Engineer
Ext. 5766

23 December 2021

Purpose of Report

The purpose of this report is to consider introduction of prohibition of waiting and bus stop restrictions on Huddersfield Road (A62) in Scouthead in the vicinity of Focus Education and Saddleworth Stars Nursery School to combat dangerous and obstructive parking associated with the site.

Recommendation

It is recommended that no waiting at any time (double yellow lines) and bus stop cage markings (clearway) restrictions be introduced on Huddersfield Road in Scouthead in the vicinity of Focus Education and Saddleworth Stars Nursery School.

Proposed Prohibition of Waiting - Huddersfield Road, Scouthead

1 Background

- 1.1 This report rescinds ModGov Report 3154. Sections 1.3 to 1.9 in this report are copied from the previous report and are relevant to this scheme. The new scheme contains the same proposals as the previous scheme except for additional restrictions proposed on the north side of Huddersfield Road. (AC)
- 1.2 The previous scheme was advertised in November 2019 and generated several objections. Prior to a decision being made, Saddleworth Stars Nursery applied for planning permission to create a car park adjacent to the building for staff and parents to use, partly to offset the loss of on-street parking space that the proposal would create. Planning approval was granted in 2020. The access to the car park is located on the north side of Huddersfield Road to the east of the nursery. The access is not protected with any existing waiting restrictions and nor were any proposed in the previous scheme. Officers feel that the proposals in the original scheme should be extended eastwards to protect the visibility splay at the new car park access. Due to the horizontal alignment of Huddersfield Road at this point, any vehicles parked close to the access severely restrict visibility along the main road. (AC)
- 1.3 The A62 Huddersfield Road is the main route linking Oldham to Huddersfield. At the location concerned in this report the highway is subject to a 30mph speed limit and street lighting.
- 1.4 A private business, The Saddleworth Stars Nursery has been operating in the former Saddleworth Preparatory School site for a number of years. Currently there are school keep clear markings on the A62 outside the site. The current operating hours of the nursery are 7.30am to 6.00pm. The TRO for the markings restricts stopping on the markings Monday to Friday 8am to 5pm. There is unrestricted parking on the highway between the end of the markings and the double yellow lines extending 25 metres from Doctor Lane.
- 1.5 Focus Education is a private conference and exhibition centre that has been operating from the former St Pauls Church for a number of years. The centre has a large off street car park that caters for both staff and visitors parking needs. The car park access and exit are direct from the A62.
- 1.6 There are bus stops on the A62 in both directions adjacent to the sites, there is a further stop on the Oldham bound carriageway approximately 30 metres west of Platting Road. None of the bus stops are protected by bus cage markings (Clearways).

1.7 Complaints have been received from Focus Education regarding vehicles parked right up to their car park entrance. The parked vehicles obstruct the visibility for vehicles leaving their site. Observations on site taken during various visits have confirmed the complaint. Site visits have also recorded vehicles being parked at the bus stop on the Huddersfield bound carriageway. This forces buses to stop blocking the Huddersfield bound lane.

1.8 In view of the above it is felt that the following measures should be introduced to alleviate the problems being experienced. To introduce:

- Bus stop cage (Clearways);
- Remove existing School Keep Clear Markings;
- Install double yellow lines on both sides of the A62 adjacent to the site.

1.9 The extents of the proposals are contained in the schedule at the end of this report.

2 Options/Alternatives

2.1 Option 1: To approve the recommendation

2.2 Option 2: Not to approve the recommendation

3 Preferred Option

3.1 The preferred option is Option 1

4 Justification

4.1 In view of the obstructive parking practices taking place it is felt that the introduction of the proposed restrictions should be progressed.

5 Consultations

5.1 G.M.P. View - The Chief Constable has been consulted and has no objection to this proposal.

5.2 T.f.G.M. View - The Director General has been consulted and has no comment on this proposal.

5.3 G.M. Fire Service View - The County Fire Officer has been consulted and has no comment on this proposal.

5.4 N.W. Ambulance Service View - The County Ambulance Officer has been consulted and has no comment on this proposal.

6 Comments of Saddleworth North Ward Councillors

6.1 The Ward Councillors have been consulted and no comments have been received.

7 Financial Implications

7.1 The cost of introducing the Order is shown below:

	£
Advertisement of Order	1,200
Introduction of Road Markings	1,000
Total	2,200
Annual Maintenance Cost (calculated November 2021)	100

7.2 The advertising and road marking costs of £2,200 will be funded from the Highways Operations – Unity budget.

7.3 The annual maintenance costs estimated at £100 per annum will be met from the Highways Operations budget. If there are pressures in this area as the financial year progresses, the Directorate will have to manage its resources to ensure that there is no adverse overall variance at the financial year end.

(Nigel Howard)

8 Legal Services Comments

8.1 The Council must be satisfied that it is expedient to make the Traffic Regulation Order in order to avoid danger to persons or other traffic using the road or any other road or for preventing the likelihood of any such danger arising, or for preventing damage to the road or to any building on or near the road, or for facilitating the passage on the road or any other road of any class of traffic, including pedestrians, or for preventing the use of the road by vehicular traffic of a kind which, or its use by vehicular traffic in a manner which, is unsuitable having regard to the existing character of the road or adjoining property or for preserving or improving the amenities of the area through which the road runs.

8.2 In addition to the above, under section 122 of the Road Traffic Regulation Act 1984, it shall be the duty of the Council so to exercise the functions conferred on them by the Act as to secure the expeditious, convenient and safe movement of vehicular and other traffic (including pedestrians) and the provision of suitable and adequate parking facilities on and off the highway. Regard must also be had to the desirability of securing and maintaining reasonable access to premises, the effect on the amenities of any locality affected and the importance of regulating and restricting the use of roads by heavy commercial vehicles so as to preserve or improve the amenities of the areas through which the roads run, the strategy produced under section 80 Environmental Protection Act 1990 (the national air quality strategy), the importance of facilitating the passage of public service vehicles and of securing the safety and convenience of persons using or desiring to use such vehicles and any other matters appearing to the Council to be relevant.

8.3 In relation to the bus stop clearways, since 2002 it has been possible to introduce a bus stop clearway without the need for a Traffic Regulation Order. The Council has introduced an approvals procedure for dealing with bus stop clearways which to a large extent mirrors the procedure to be followed when making Traffic Regulation Orders. It is recommended that the approval procedure be followed. (A Evans)

9 **Co-operative Agenda**

9.1 In respect of this proposal there are no Co-operative issues or opportunities arising and the proposals are in line with the Council's Ethical Framework.

10 **Human Resources Comments**

10.1 None.

11 **Risk Assessments**

11.1 None.

12 **IT Implications**

12.1 None.

13 **Property Implications**

13.1 None.

14 **Procurement Implications**

14.1 None.

15 **Environmental and Health & Safety Implications**

15.1 Energy – Nil.

15.2 Transport – Nil.

15.3 Pollution – Nil.

15.4 Consumption and Use of Resources – Nil.

15.5 Built Environment – Nil.

15.6 Natural Environment – Nil.

15.7 Health and Safety – The introduction of the proposed restrictions on the A62 as detailed, will create a safer environment for both motorists and pedestrians.

16 **Equality, community cohesion and crime implications**

16.1 None.

17 **Equality Impact Assessment Completed?**

17.1 No.

18 **Key Decision**

18.1 No.

19 **Key Decision Reference**

19.1 Not applicable.

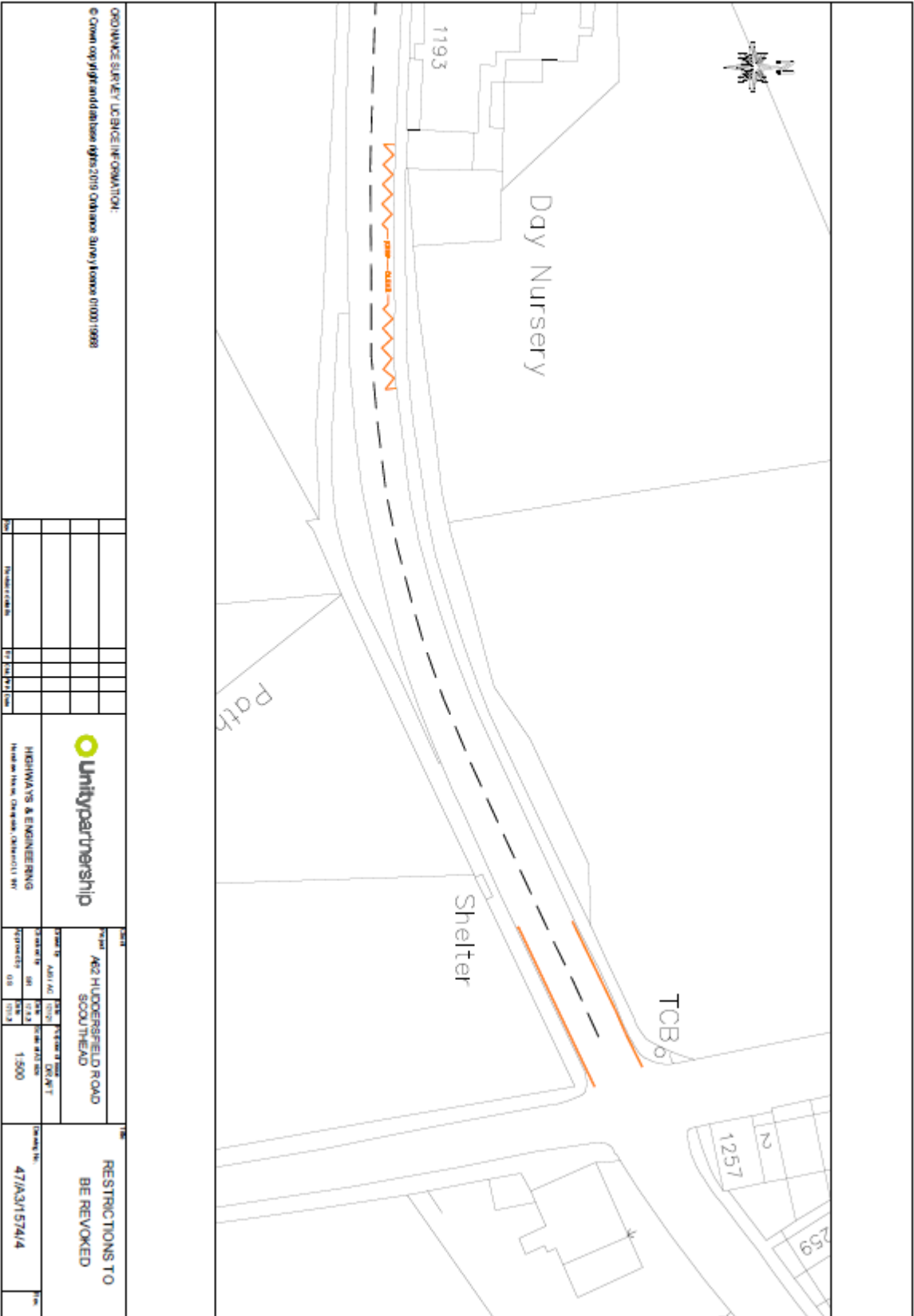
20 **Background Papers**

20.1 The following is a list of background papers on which this report is based in accordance with the requirements of Section 100(1) of the Local Government Act 1972. It does not include documents which would disclose exempt or confidential information as defined by the Act:

None.

21 **Proposal**

21.1 It is proposed that a Traffic Regulation Order be introduced in accordance with the following schedule and drawing number.



Schedule (AC)

Drawing Number 47/A3/1547/3

Add to the Oldham Borough Council (Saddleworth area) Consolidation Order 2003

Column 1	Column 2	Column 3	Column 4	Column 5
Item No	Length of Road	Duration	Exemptions	No Loading
	<u>A62 Huddersfield Road</u> (South Side) From its junction with Platting Road for a distance of 341 metres in a westerly direction	At Any Time	A, B1, B3, B4, C, E, K3	
	<u>A62 Huddersfield Road</u> (North Side) From its junction with Doctor Lane for a distance of 260 metres in a westerly direction	At Any Time	A, B1, B3, B4, C, E, K3	

No Stopping Order (Bus Stop Clearway)

Column 1	Column 2	Column 3	Column 4	Column 5
Item No	Length of Road	Duration	Exemptions	No Loading
	<u>Huddersfield Road</u> (South Side) From a point 22 metres west of its junction with Platting Road for a distance of 23 metres in a westerly direction	24 Hours		
	<u>Huddersfield Road</u> (South Side) From a point 179 metres west of its junction with Platting Road for a distance of 23 metres in a westerly direction	24 Hours		

	<u>Huddersfield Road</u> (North Side) From a point 237 metres west of its junction with Doctor Lane for a distance of 23 metres in a westerly direction	24 Hours		
--	---	----------	--	--

Drawing Number 47/A3/1547/4

Revoke from the Oldham Borough Council (Saddleworth area) Consolidation Order
2003


Column 1	Column 2	Column 3	Column 4	Column 5
Item No	Length of Road	Duration	Exemptions	No Loading
	<u>Huddersfield Road</u> (Both sides) From its junction with Platting Road / Doctor Lane for a distance of 25 metres in south westerly direction	At any time	A, B1, B3, B4, C, E, J, K3	

Revoke The Oldham – Huddersfield Road (Scouthead) Prohibition of Stopping Order
2003

Column 1	Column 2	Column 3
Item No	Length of Road	Duration
	<u>A62 Huddersfield Road</u> (North Side) Outside the entrance to Saddleworth Preparatory School, Huddersfield Road, Scouthead, Oldham	Mandatory School Keep Clear Markings: No Stopping on School Keep Clear Markings 8am – 5pm Monday to Friday

APPROVAL

Decision maker

Signed: 
Cabinet Member,
Neighbourhoods

Dated: 14th January 2022

In consultation with

Signed: John Lamb
Interim Director of
Environmental Services

Dated: 10th January 2022